



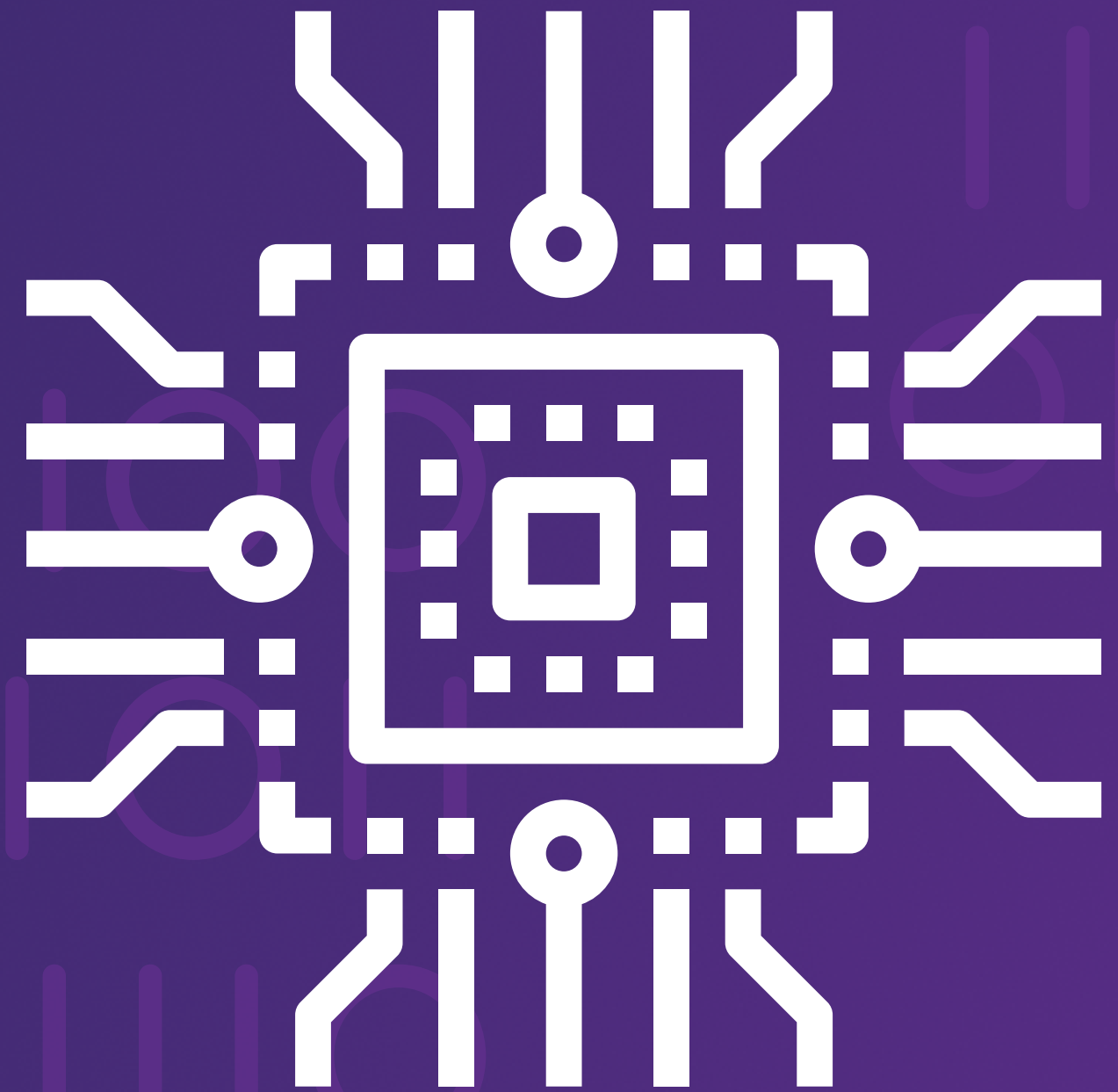
# Enlabeler

Your First Step to Artificial Intelligence

**Company Brochure**

Enlabeler offers access to multiple high-quality data solutions that are essential to machine learning models.

Our platform is an end-to-end solution for companies who want to automate business processes with high-quality annotated data. Our tools **enable you** to build your best AI.



Enlabeler





Why us?

## We offer competitive labeled datasets

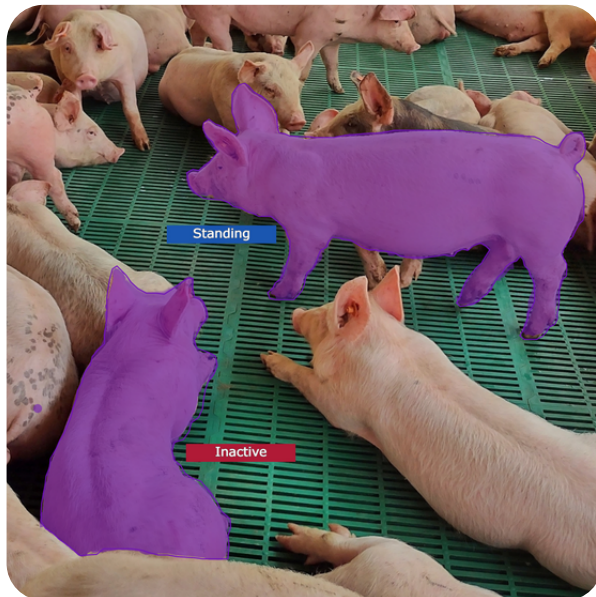
- Quick turnaround times through our 24/7 remote workforce that works via our state-of-the-art platform
- Highest level of quality - guaranteed by a two layer QA process with domain experts
- Fair and modest prices that are internationally competitive
- Specialized in African datasets that are available for each region and domain



# Our Use Cases

We deliver **high-quality training datasets** with integrated and secure data pipelines. Proven experience with AI Applications across multiple industries.

## AGRITECH



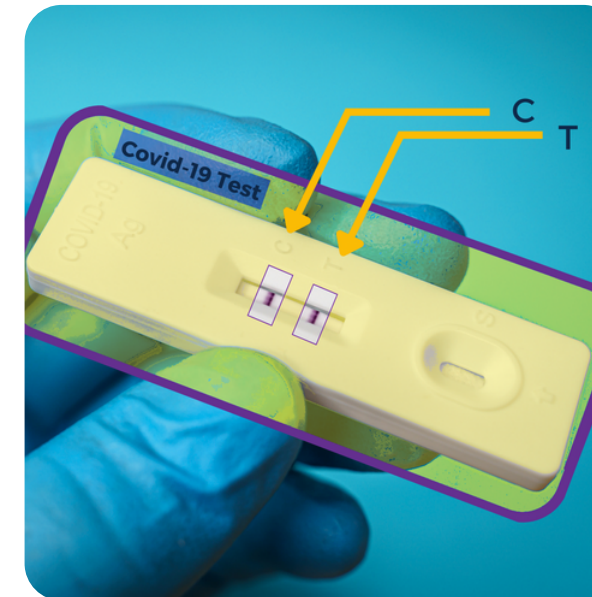
- Detection of health anomalies or contagious diseases
- Predict behaviors of different animals
- Fruit/blossom annotation for yield predictions and tree annotations for orchard counting & mapping

## ENERGY & CONSERVATION



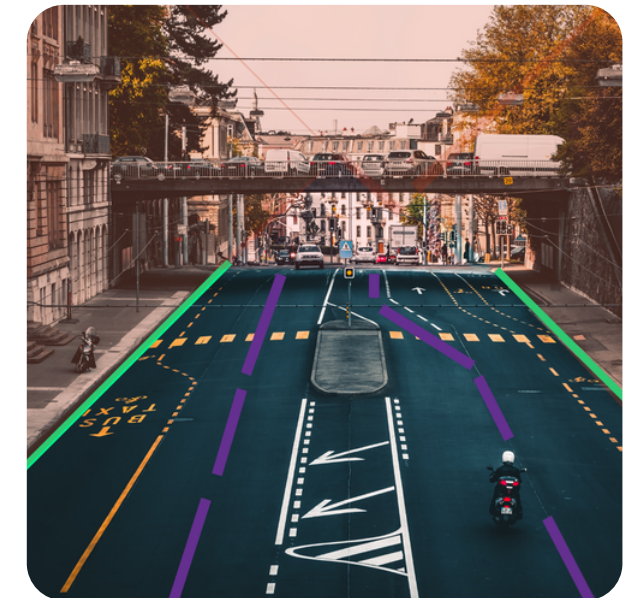
- Cloud detection for better weather forecasting
- Monitoring bodies of water to predict potential drought
- Conservation of wildlife, forestry, and water sources
- Different forms of waste detection for recycling and conservation models

## HEALTH CARE



- Medical image labeling such as SCANS, CTs and MRIs
- Point annotation for monitoring better poses for performance of sports players
- Counting of cells and tissues for defect detection
- Developing and mappings for natural language to medical terms

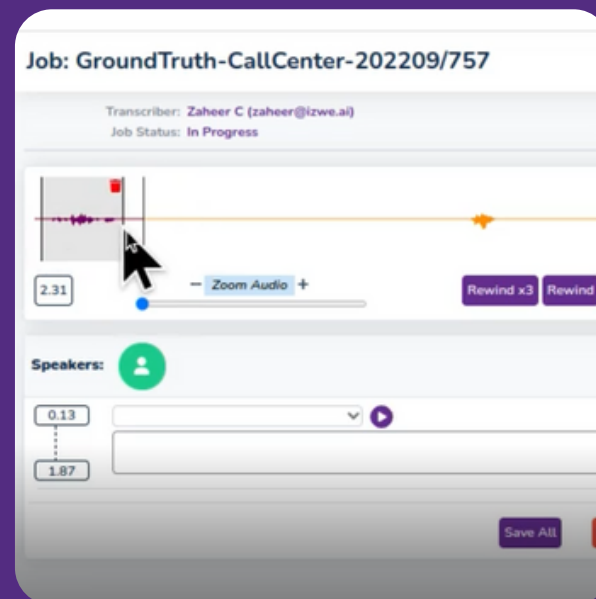
## INFRASTRUCTURE



- Traffic surveillance
- Infrastructure planning and management
- Inspection and safety monitoring of equipment
- Predictive maintenance

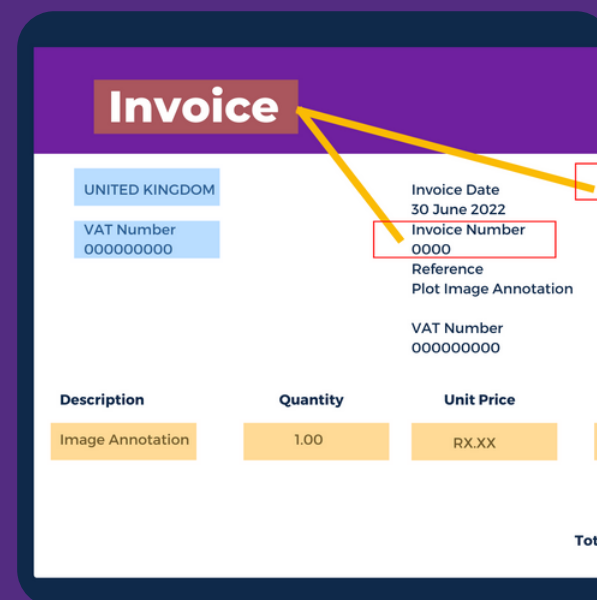


## MEDIA AND ENTERTAINMENT



- Brand and customer sentiment analysis
- Virtual chatbot with multilingual capacity
- Content recommendation and creation
- Chaptering for YouTube videos

## FINANCE



- Document digitization
- Anonymization/FICA
- Document recognition
- Document classification
- Review of ML outputs

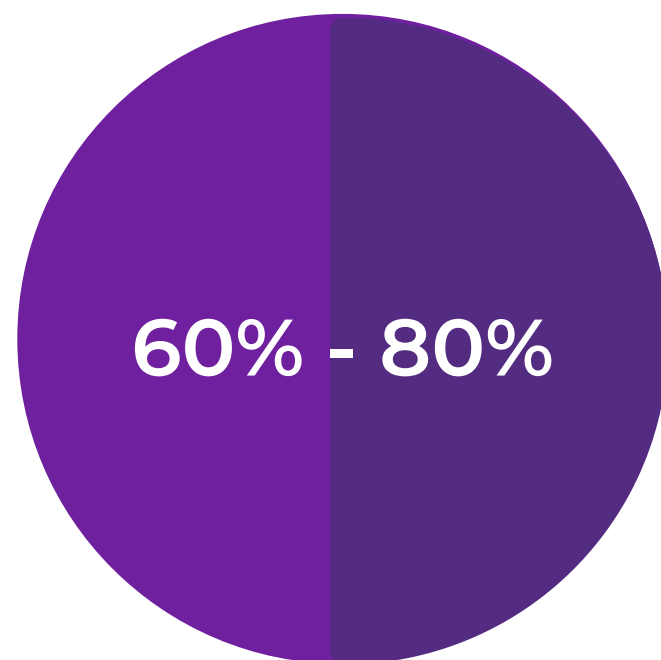


Enlabeler

# How we can help with your problem

## Problem

Amount of time data scientists  
spend on cleaning data:



SOLUTION 01

**Data clean-up & structuring**

SOLUTION 02

**Removing biases**

SOLUTION 03

**Data labeling & classification**

SOLUTION 04

**Training datasets**

SOLUTION 05

**Automated data pipelines**

SOLUTION 06

**ML model building & testing**



Enlabeler

Solutions

# Our Services

Secure and cloud-agnostic data pipelines, seamless cloud integrations, and dataset conversions.

We enable you to build and train your best ML models

## IMAGE ANNOTATION



## VIDEO ANNOTATION



## AUDIO TRANSCRIPTION



## TEXT ANNOTATION



# Enlabeler is dedicated towards creating a more inclusive and unbiased AI environment and enabling the AI talent pipeline for Africa



- Removing biases out of datasets and AI models
- A highly flexible and motivated workforce that is constantly developing itself
- Giving back to the community



Enlabeler





# Enlabeler

Your First Step to Artificial Intelligence

Get in touch with us today at



[info@enlabeler.com](mailto:info@enlabeler.com)



---

[www.enlabeler.com](http://www.enlabeler.com)